

Early Detection and Early Intervention

Challenges and Solution Strategies in the Framework of CBR Programmes.

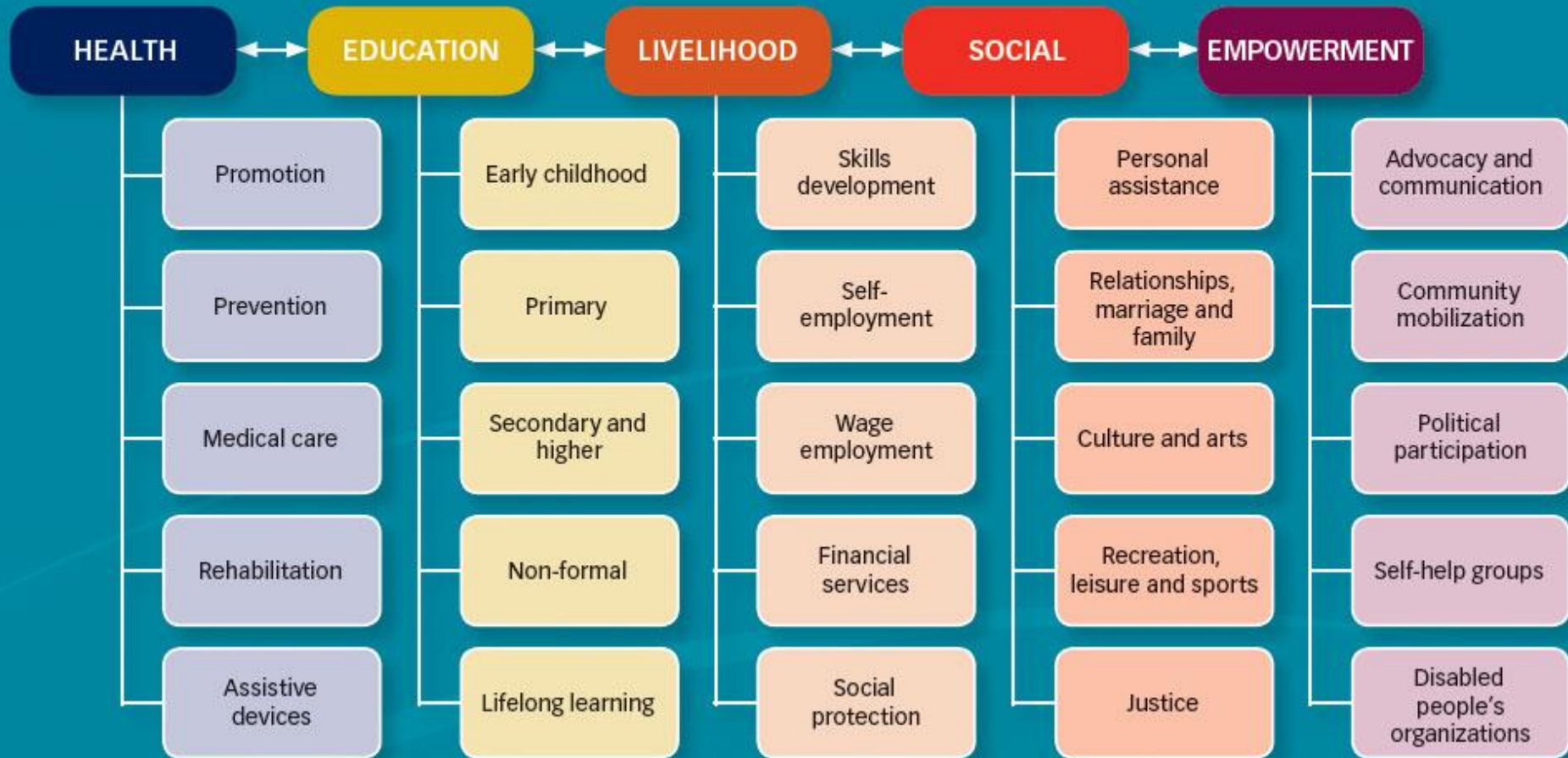
Early detection and intervention

- Early detection and early intervention
 - System to check young children for signs of disability
 - Working with young children who are slow in development or have impairments
 - Educating and teaching families
 - Prevent disabilities in babies and young children



CBR guidelines: early detection and early intervention

CBR MATRIX



Early detection and intervention

Health component



- Primary prevention = stop from occurring
- Secondary prevention includes early detection and treatment
- Tertiary prevention = reduce consequences of existing health condition

Community-Based Rehabilitation

CBR Guidelines

Health component



Community-Based Rehabilitation **CBR Guidelines**

CBR programmes can assist with early identification

Health care

- Establish mechanism
- Identify screening activities (eg tb, leprosy, river blindness, diabetes, cancer)
- Genetic or hereditary conditions: Refer for assessment and counselling
- Know about secondary conditions
- Refer if people may benefit from surgery

Health component



Community-Based Rehabilitation

CBR Guidelines

Health care

CBR programs can:

- Provide follow up after screening
- Refer to other levels in health care system
- Advocate for inclusion
- Identify barriers
- Identify gaps in service provision
- Habilitation and rehabilitation

- Ensure access to early treatment by promoting and encouraging collaboration with primary health care

Health component



Community-Based Rehabilitation

CBR Guidelines

Early intervention

CBR workers can:

- Provide early intervention activities, usually home based.
- Encourage parents to meet together
- Facilitate playgroups

- Child development:
Physical, speech and
language, cognitive, social
and emotional

Early childhood care and education

Education component



Community-Based Rehabilitation
CBR Guidelines

- Early childhood = birth till primary education
- Focus in Education component: 3 years and older

Education component



Community-Based Rehabilitation

CBR Guidelines

Early childhood care and education

- Understanding of early years depends on local traditions, faith/religion, cultures, family structure and way primary schooling is organized.

- CBR workers understand:
Developmental delay: milestones are not reached at appropriate age
 - Social, emotional, cognitive, speech and language, physical development
 - Influenced by health, nutrition, care and education

Education component



Community-Based Rehabilitation

CBR Guidelines

Early childhood care and education

CBR workers :

- Understand importance of play
- Age appropriate activities
- Support families in making choices
- Work towards inclusive early childhood education provisions



Early childhood care and education and CBR

1. Identify early childhood needs
 - Support early learning at home
 - Involve families
2. Promote home-based activities
3. Support learning in the community
4. Help develop inclusive preschools
5. Ensure specialist services are available and accessible
6. Involve adults and children with disabilities
7. Carry out training and awareness-raising
8. Address poverty
9. Lobby and advocate for inclusion
10. Prepare for emergency, conflict and refugee situations

Early identification and early intervention

Empowerment component



- Support establishment of parent groups

Community-Based Rehabilitation

CBR Guidelines