

Disability inclusion in the health sector: Global Challenges



Global Challenges in disability inclusion

**The three main
health challenges that
humanity has today**

**Benefiting
from
Universal Health
Coverage
UHC**

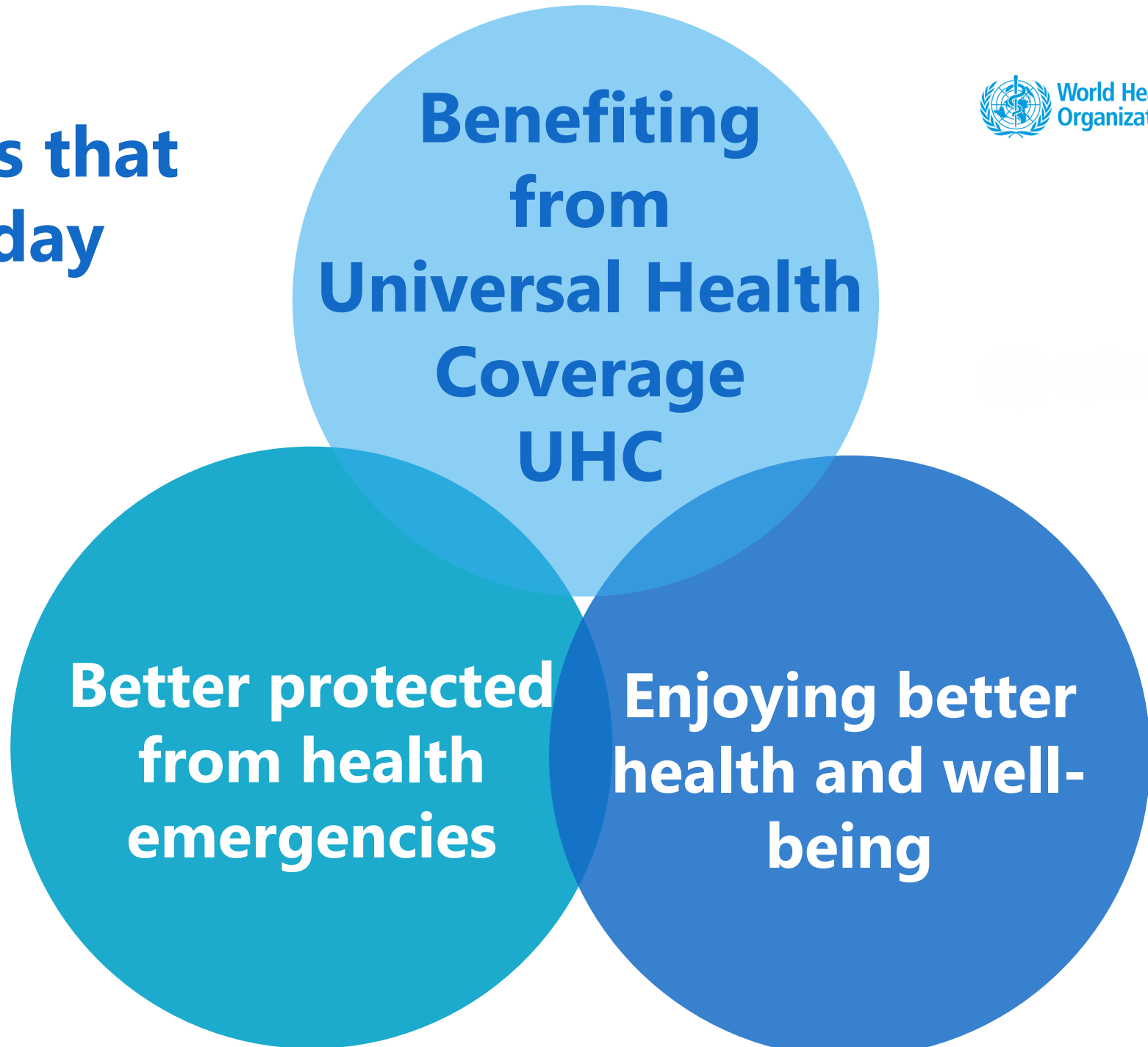


The three main health challenges that humanity has today

Benefiting from Universal Health Coverage UHC

Better protected from health emergencies

The three main health challenges that humanity has today



How we can ensure that persons with disabilities ...

Can benefit from Universal Health Coverage UHC?

Are Better protected from health emergencies?

Enjoy better health and well-being?



What puzzles me ...

Even if ...

- ... we have a clear vision rooted in the CRPD
- ... there are political commitment in countries at the highest level of the government
- ... we know the barriers and the actions to address them



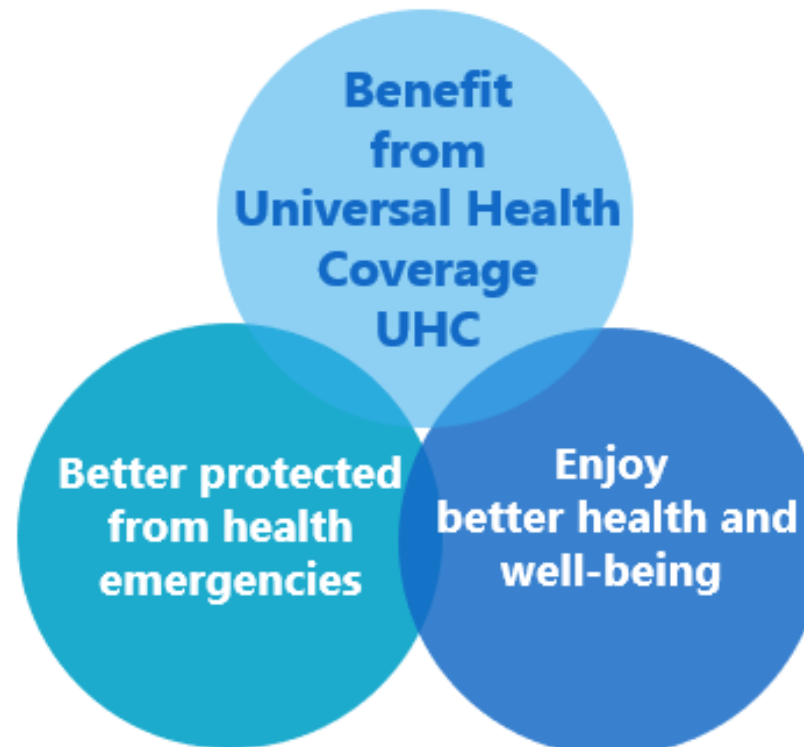
**The challenges are
not addressed**

Two fundamental challenges

Lack of evidence-based technical guidance



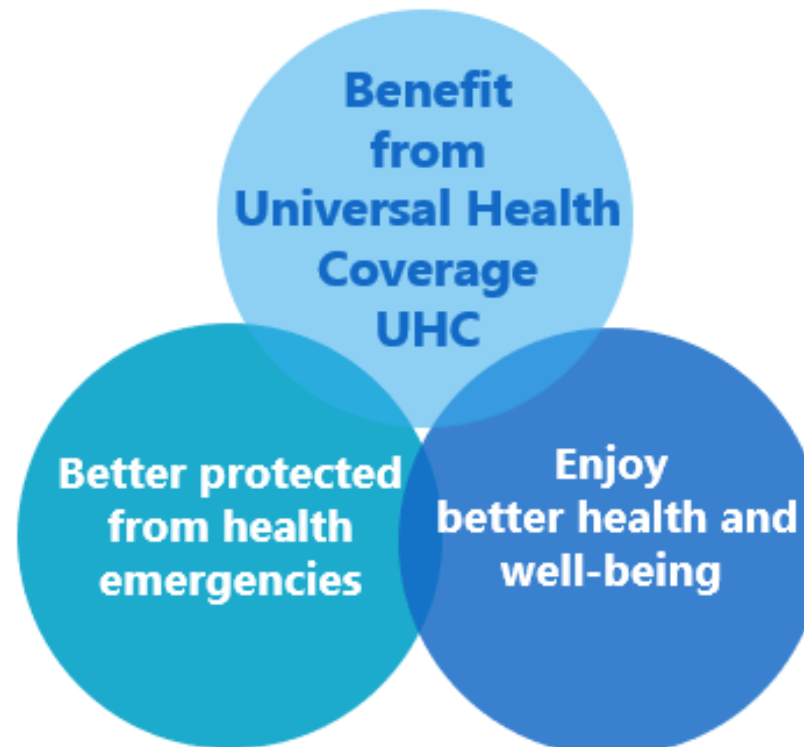
Lack of evidence-based technical guidance



Lack of evidence-based technical guidance

What do I need to do to ensure disability inclusion?

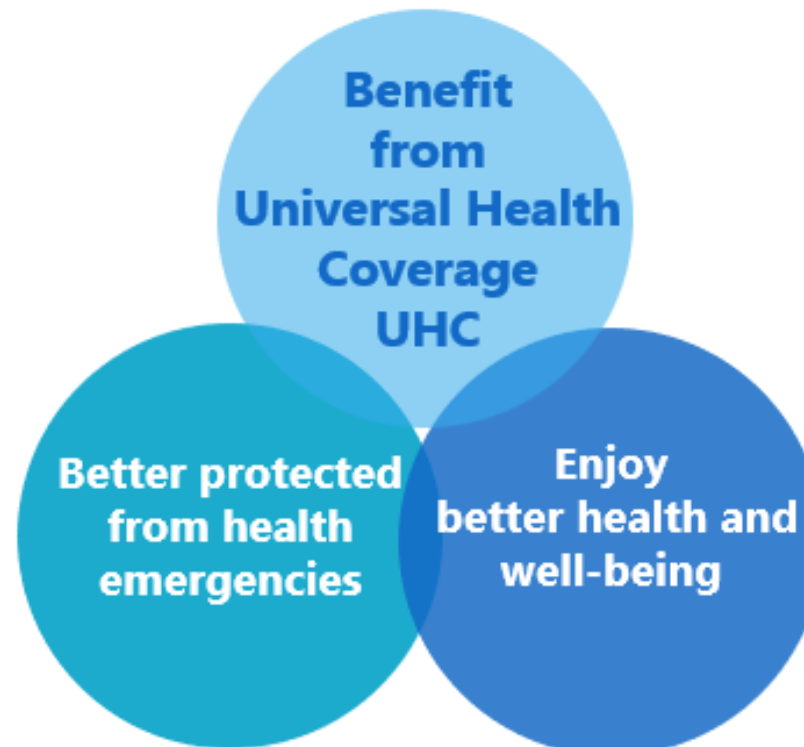
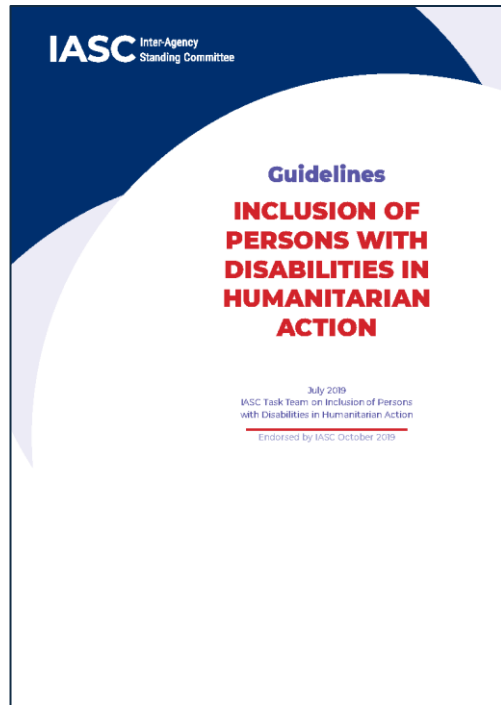
How much will it cost?



Lack of evidence-based technical guidance

What do I need to do to ensure disability inclusion?

How much will it cost?



Still, what do I need to do?

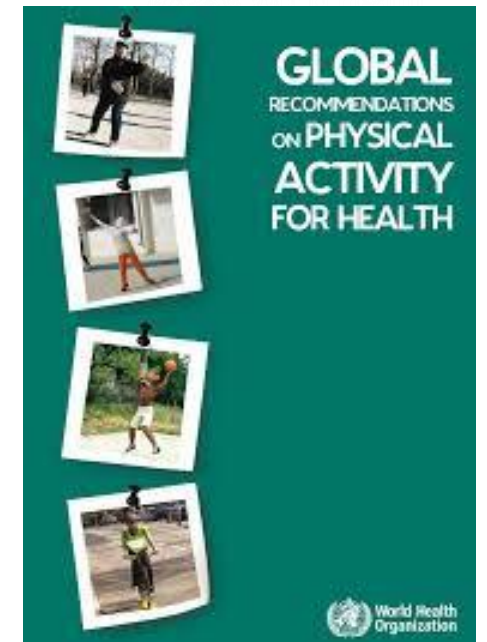
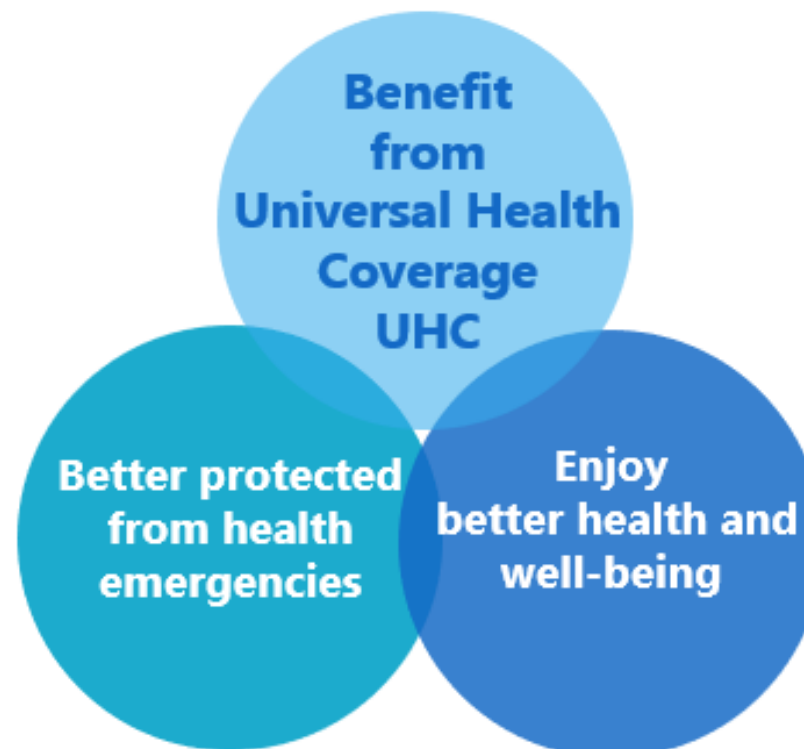
Lack of evidence-based technical guidance

What do I need to do to ensure disability inclusion?

How much will it cost?

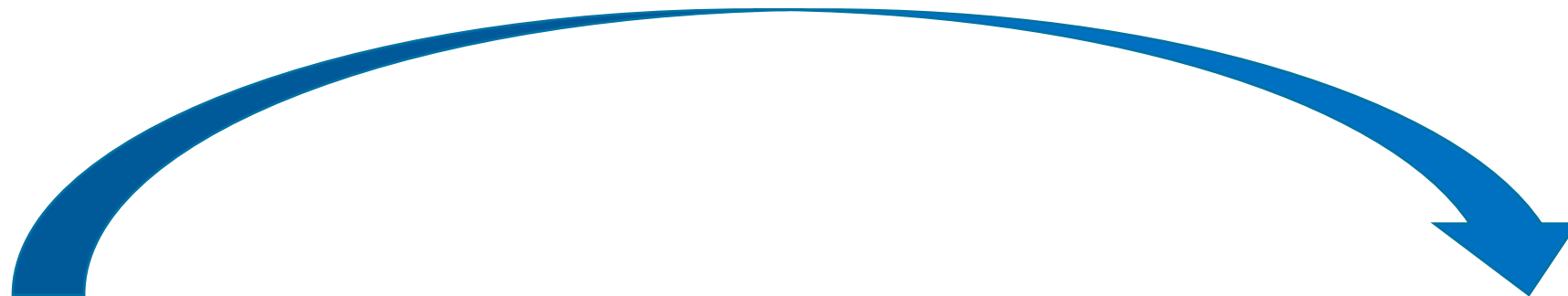


Still, what do I need to do?



What evidence based recommendations can we include?

Evidence- based guidance



Advocacy

Action

Making disability inclusion a political priority in global health



Making disability inclusion a political priority in global health



Sorry, disability inclusion is not under the ministry of health



Lack of evidence-based technical guidance

Disability inclusion not a political priority in health

OPPORTUNITIES

1 Recognition

2 Partnership

1 Recognition



1

Recognition

- Disability is not only but also a health issue
 - It does not mean that 'we are going back to the medical model'

1

Recognition

- Disability is not only but also a health issue
 - It does not mean that ‘we are going back to the medical model’
- There are impairments and primary health conditions underlying the disability
 - This does not imply any a value judgment about the individual

1

Recognition

- Disability is not only but also a health issue
 - It does not mean that ‘we are going back to the medical model’
- There are impairments and primary health conditions underlying the disability
 - This does not imply any a value judgment about the individual
- Persons with disabilities are particularly vulnerable in a public health crisis

2

Partnership



2

Partnership

- **DPOs equal partners in moving disability inclusion in the health sector**
 - WHO and IDA are closing a collaboration agreement

We will get the job done ...

The time is now ...

Thank you!



WHO

Dr Alarcos Cieza

Disability Programme
ciezaa@who.int
@AlarcosC

www.who.int/health-topics/disability